



EIT initiatives and approaches towards addressing Grand Challenges

Peter Olesen
Chairman of the EIT Governing Board

33rd Conference of Rectors and Presidents of
European Universities of Technology
Chalmers, Gothenburg
20 September 2014

EUROPEAN INSTITUTE OF INNOVATION & TECHNOLOGY (EIT)

The EIT is an independent EU body set up in 2008. Its mission is to:

increase European sustainable growth and competitiveness

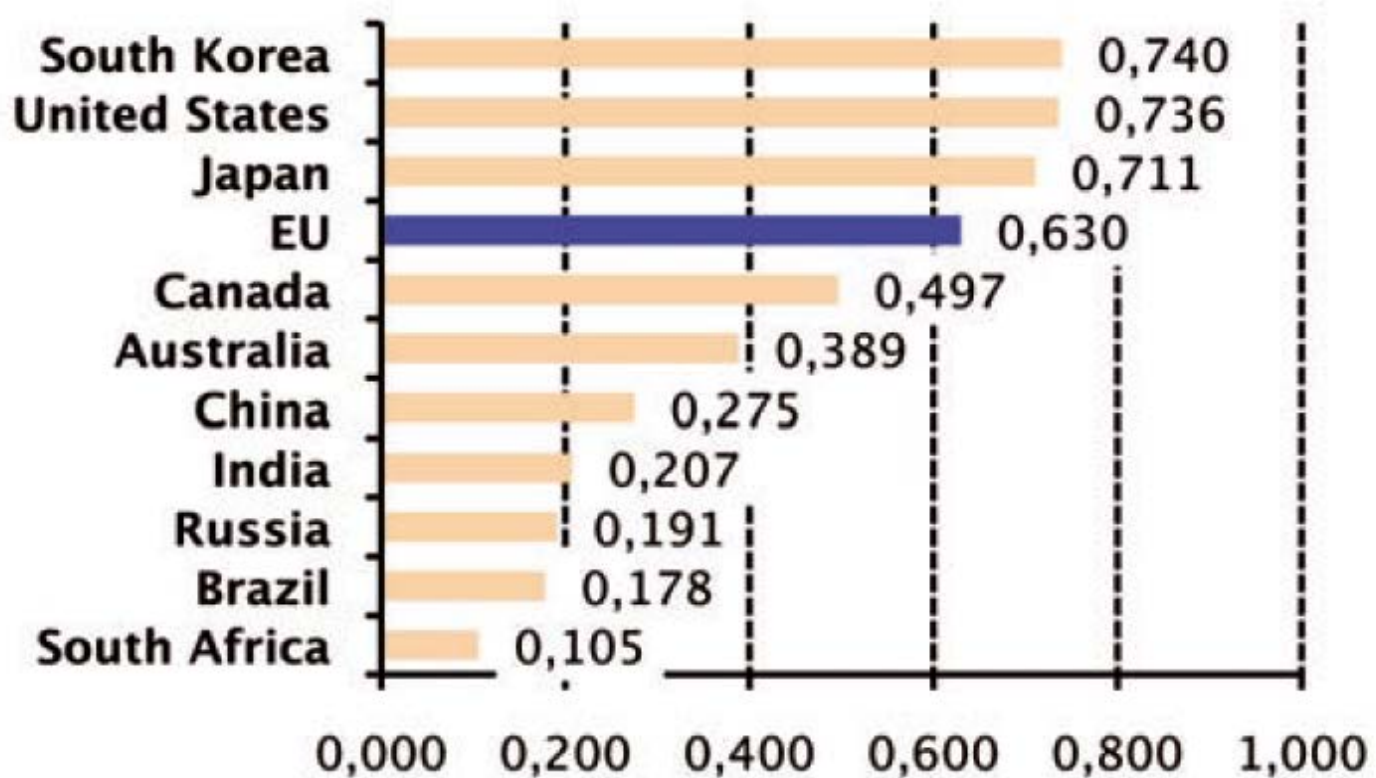
create the entrepreneurs of tomorrow and prepare for the next innovative break-throughs



reinforce the innovation capacity of the EU and its Member States

become the catalyst for a step change in the European Union's innovation capacity and impact

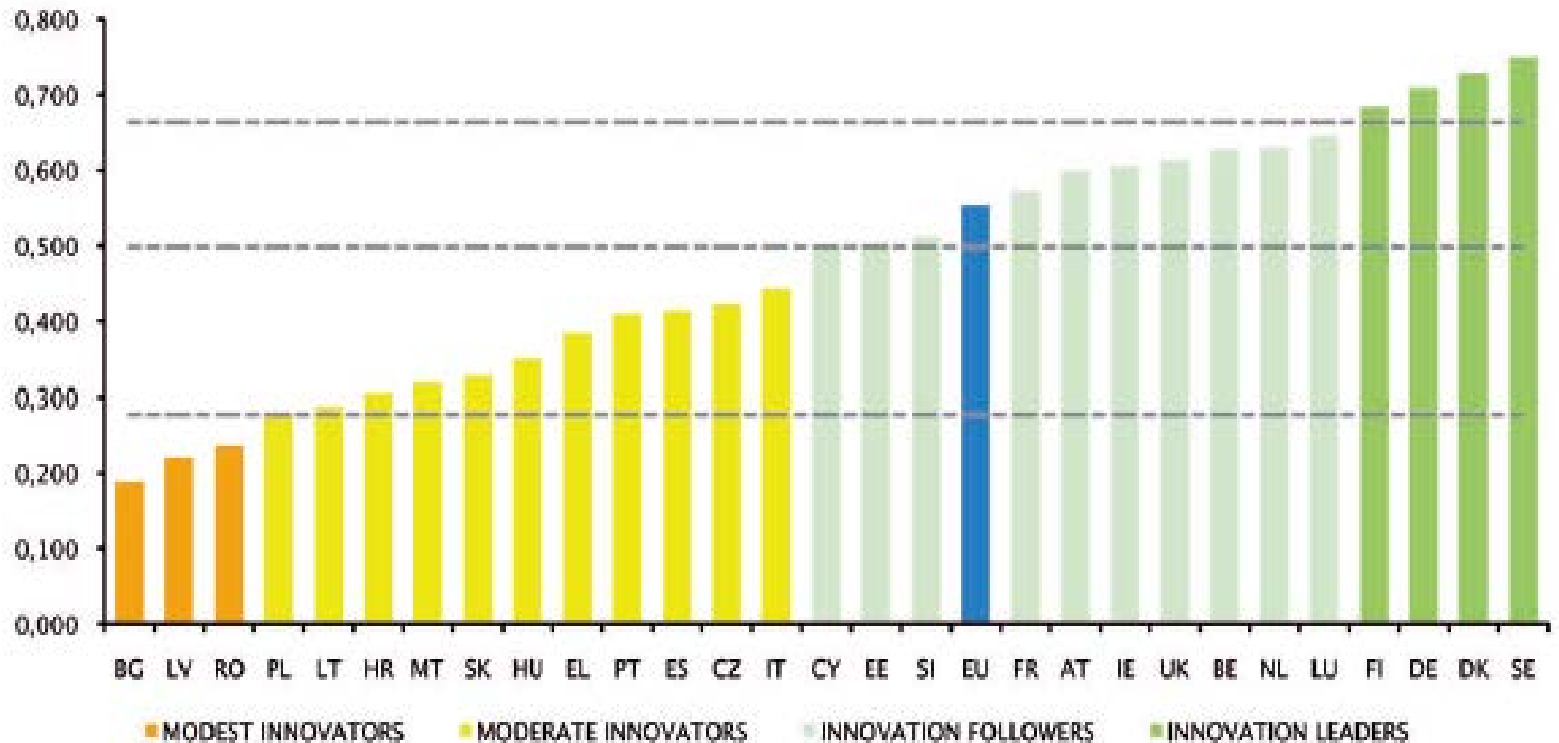
HOW DO WE COMPARE GLOBALLY?



Global innovation performance

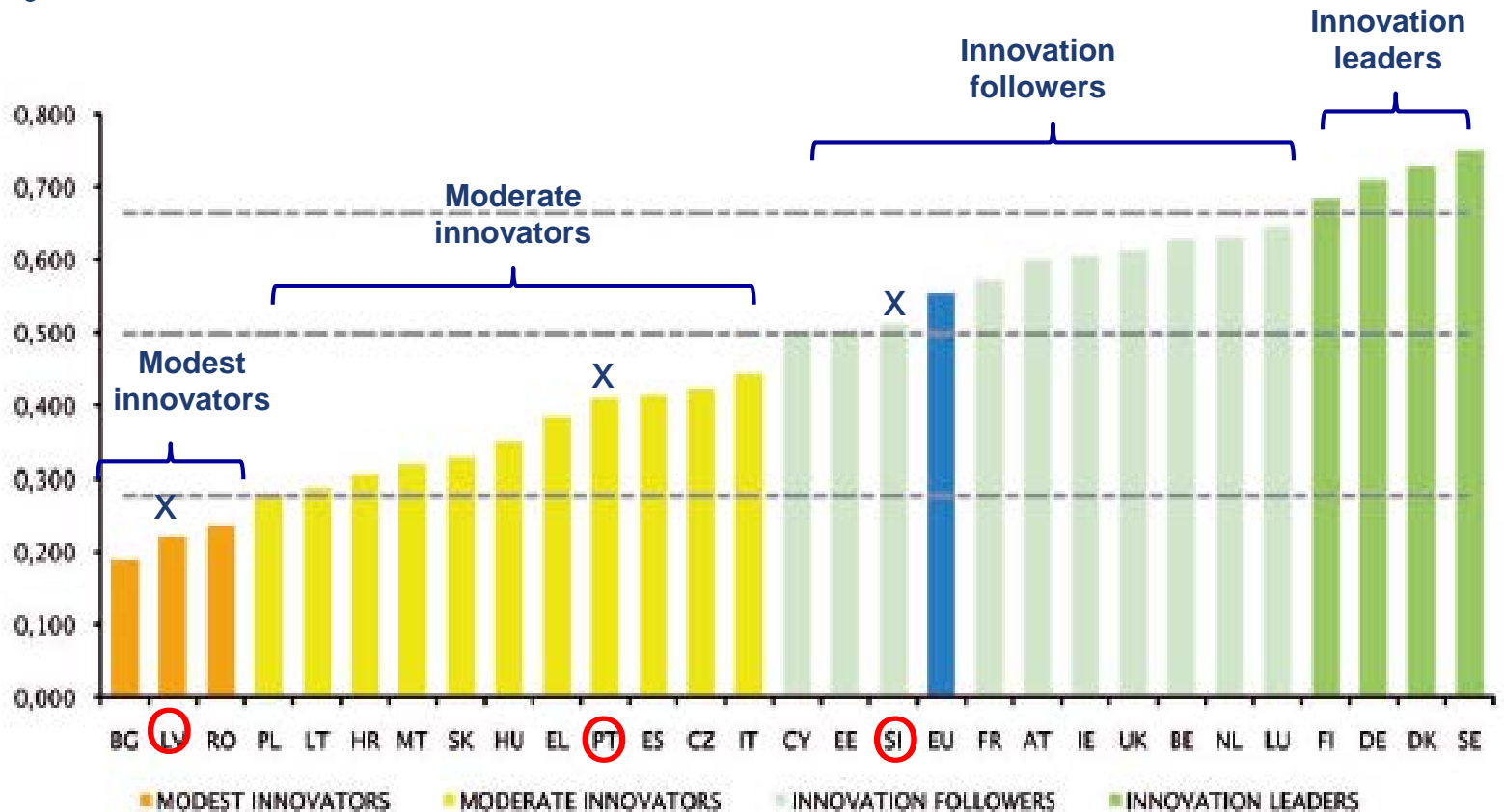
Innovation Union Scoreboard 2014 – European Commission

INNOVATION IN THE EUROPEAN UNION



EU Member States' Innovation performance
Innovation Union Scoreboard 2014 – European Commission

INNOVATION IN THE EUROPEAN UNION



EU Member States' Innovation performance
 Innovation Union Scoreboard 2014 – European Commission

(X) Fastest growth in innovation performance

EUROPEAN INSTITUTE OF INNOVATION & TECHNOLOGY (EIT)

- The EIT is the first EU initiative bringing together the three sides of the 'knowledge triangle': business (companies and SMEs), higher education institutions and research centres.
- With entrepreneurship in the driver's seat, the EIT aims to increase the cooperation and integration between higher education, business and research to facilitate the transition from:





EIT'S KNOWLEDGE & INNOVATION COMMUNITIES (KICS)

KNOWLEDGE & INNOVATION COMMUNITIES

The EIT's KICs are:

- highly integrated, creative and excellence-driven autonomous long-term partnerships;
- internationally distributed but thematically convergent partners;
- driven by societal challenges and fostering the emergence of entrepreneurs.



THE KIC MODEL: a 'Business' logic

- **High degree of integration:** each KIC is an independent legal entity, gathering world-class partners from across the knowledge triangle based on a contractual relationship/partnership with the EIT.
- **Long-term strategic approach:** each KIC is set up for a minimum of 7 years to eventually become sustainable.
- **Sufficient autonomy and flexibility:** to determine organisational structure and activities governed by a Board of KIC partner organisations.
- **Effective governance:** run by a CEO and a lean management team at central and co-location centre level.

THE KIC MODEL: An 'Investment' logic'

- **Smart funding & high degree of commitment of partners:** EIT funding to KICs is max. 25% of their total budget over time with 75% to be attracted from other sources, both public and private.
- **The co-location model:** each KIC consists of 5-7 world class innovation hotspots building and leveraging on existing European capacities.
- **Results & high impact oriented activities:** KICs implement a Business Plan with measurable deliverables, results and impact.
- **Culture:** KICs are shaped by strong entrepreneurial mindsets and cultures.

EIT ACROSS EUROPE

KICs' CO-LOCATION CENTRES

Climate-KIC:

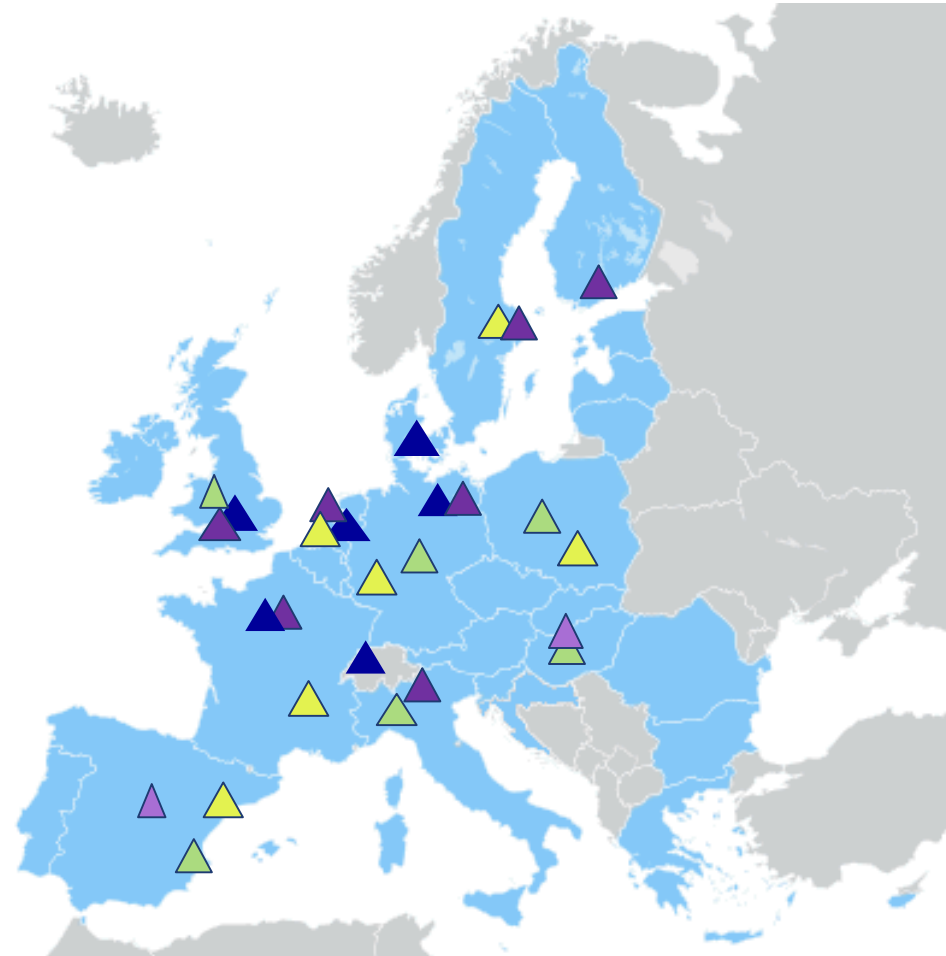
- ▲ Co-location Centre
- ▲ RIC (Regional Implementation Innovation Centre)

EIT ICT Labs:

- ▲ Co-location Centre
- ▲ Associate Partner

KIC InnoEnergy

- ▲ Co-location Centre



FFFFIRST ACHIEVEMENTS

Climate-KIC, EIT ICT Labs and KIC InnoEnergy are growing into thriving European innovation hubs:

19,469

Attractiveness of education programmes → more than 13 applicants per offered seat



604

of graduates



756

of business ideas incubated



186

of start-ups created



349

of knowledge transfers /adoption



141

of new or improved products, services & processes launched





EIT 2014 TO 2020



EIT - AN INTEGRAL PART OF HORIZON 2020



- The EIT contributes to H2020 by addressing societal challenges via the integration of the knowledge triangle.
- H2020 has a budget of approx. 80 billion EUR for 2014 to 2020 out of which the EIT has been allocated 2.7 billion EUR.
- The EIT will further nurture synergies and complementarities across H2020 and its different initiatives.

EIT's PRIORITIES 2014 - 2020

Fostering the growth and impact of the existing three KICs

Climate-KIC, EIT ICT Labs & KIC InnoEnergy

Creating new KICs

Sharing and disseminating EIT good practices

EIT CREATING NEW KICs

2016

Food4future

Added-value
manufacturing

2018

Urban
mobility

The EIT's 2014 Call for KIC Proposals in innovation for healthy living & active ageing and raw materials was launched on 14 February, closed on 10 September and 2 KICs will be designated in December.

All information relating to this call can be found here:

<http://eit.europa.eu/collaborate/2014-call-for-kics>



EIT EDUCATION



EIT's EDUCATIONAL VISION & MISSION

Vision → To foster entrepreneurially and innovation minded people in Europe.



Mission → To deliver a unique brand of **excellent education** responsive to both business and societal demands, focused on **innovation, entrepreneurship and creativity** distinguished by an **EIT label**.

OVERVIEW OF MAIN EIT EDUCATION ACTIVITIES

- Master and doctoral programmes
 - International cooperation, industry involvement
- Master and doctoral schools
 - Training on specific skills and competences
 - Mobility, Internships and Scholarships/fellowships
- Executive training and post-doctoral courses
- Continuous professional development courses/modules
- Learning modules and MOOCs
- Alumni and Outreach activities

EIT LABEL

For excellent educational programmes at Master and PhD levels implemented by KICs:

4 Quality criteria

1. Robust **entrepreneurship** education
2. Highly integrated, **innovative** "learning-by-doing" **curricula**
3. **Mobility**, European dimension and openness to the world
4. **Outreach** strategy and access policy

EIT Learning Outcomes



Next generation of entrepreneurs, innovators and change agents

'EIT IN A NUT SHELL' – 3 MESSAGES

1

Knowledge

Technology &
Management

People

Research based innovation



2

The 'European Paradox'

- More history & culture than science and technology
- Large cultural differences EU vs. USA, Asia etc..
- Not just imitate but build European 'legacy'

3

The EIT / KIC Model

- Strong focus on integration of education across the Knowledge Triangle
- Entrepreneurial mindset as framework
- Human capital for competitiveness – P & P
- Investing for impact



THANK YOU FOR YOUR ATTENTION!

eit.europa.eu

@EITeu



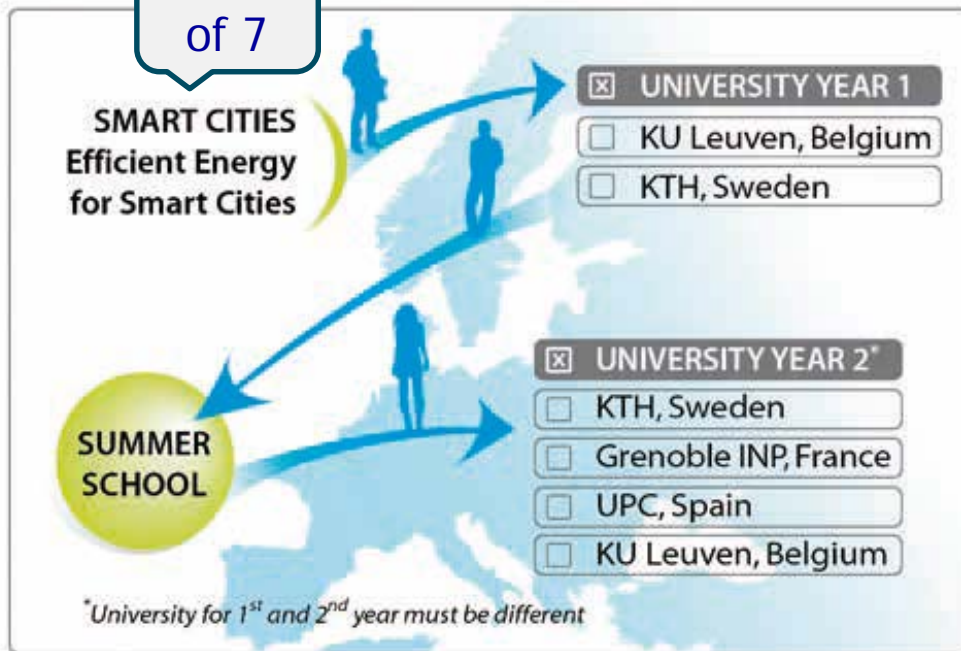
The EIT is a body of the European Union



MASTER AND DOCTORAL PROGRAMMES

EIT labels awarded per KIC by:	End 2012	End 2013
Climate-KIC	Masters: 31	Masters: 82 PhD programs: 1
EIT ICT Labs	Masters: 4	Masters: 7 PhD programs: 1
KIC InnoEnergy	Masters: 7	Masters: 7 PhD programs: 1

1 out of 7



Admission requirements

- BSc Electrical Engineering or highly related field, min 180 ECTS (of which min 60 ECTS in electrical engineering).
- In addition, min 30 ECTS in mathematics

- 1st Year: Strong focus on technologies relevant to energy supply and distribution in built-up environments
- 2nd Year: Further specialization into smart city energy networks, sustainable mobility and energy-efficient buildings.
- Summer School deepens participants' entrepreneurial skills

Track-Finder (App): Which Entry (1st Y) and Exit (2nd Y) university offers what...



7 TECHNICAL PROGRAMS

- Digital Media Technology
- Distributed Systems and Services
- Embedded Systems
- Human Computer Interaction and Design
- Internet Technology and Architecture
- Security and Privacy
- Service Design and Engineering

1st Y: Common technical competence base

2nd Y: Specialization and thesis work

Additionally a Minor in Innovation & Entrepreneurship

90
ECTS

30
ECTS

TheJourney summer school addresses important gaps in current educational offerings

- to learn about the multifaceted context of climate change
- to experience climate innovation in action
- to try it out in practise

TheJourney offers the opportunity to work within multidisciplinary teams supported by business coaches to develop and pitch own ideas as potential business ventures

TheJourney has now integrated into the KIC's Masters Programme

- 4 of the ventures that emerged from the business competition are being incubated within the KIC's colocation centres across Europe (Incubator: Accelerator)



*Pioneers in Practise Valencia
Introductory Workshop 2014*

OER – Open Education Resources or MOOCS

2013 launched first steps in preparation of a **Massive Open Online Program (MOOP)**

- basis for a training platform and some early experimental work
- continues 2014

New postgraduate programme based upon experience from the KIC's most successful educational activities in the field of innovation and entrepreneurship

Supported by the KIC's, the EIT and the European Commission

- a first, tangible, cross-KIC project
- main challenge is to establish a viable business model for the long run