

A French promising model
and
several achievements already

Yves Poilane

Director Telecom ParisTech

Board Member, Université Paris Saclay

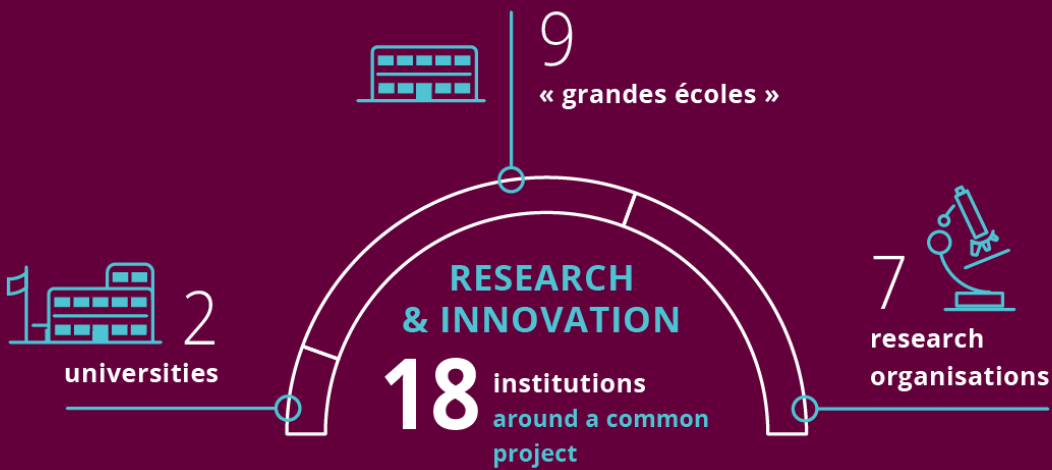




« An exemplary project, the creation of University Paris-Saclay contributes to raise the scientific level of its members »

« A key issue in the context of globalization »

François Hollande, September the 17th 2015, Paris Saclay



18 founding members

building

1 research university

A world class cluster

**Université
Paris-Saclay**

● → **1,5 G€**

900 M€ endowment
+ 600 M€ 4 years
income interest

Plan campus
(academic buildings)

● → **2,5 G€**

Infrastructures
Paris-Saclay cluster authority

● → **1 G€
+ 10 G€**

Private investment

New Line of the Grand Paris Express
Société du Grand Paris

● → **1,5 G€
+ 4,5 G€**

Greater Paris other lines

Greater Paris Project as a lever

Education



65,000
students



15,000
in master degree



8 schools



49 master programs
500 master tracks



6,000
PhD students



23%
of foreign students,
researchers
and professors



15%
of French research



1
acceleration
of technology
transfer company

Key major Data

Research



9,000
researchers
and professors



8,000
publications/year



10
departments



300
laboratories

Innovation



200
startups

60 in 2013



1
student
entrepreneurship
pole PEIPS



1
fablab



6
incubators



A single chart for Master Diploma
of Université Paris-Saclay



49 two years masters
500 Tracks for 2nd year



A common identifier
for all scientific publications



8,000/year

first name, family name, laboratory, institution, Université Paris-Saclay, address



A single Doctoral Diploma
of Université Paris-Saclay



1,500 Phd/year
20 doctoral schools

Diplôme de docteur de l'UPSay



A welcome international office
for international applicants

Single entry point at l'X

20% of students , 57 nationalities
Single entry for applicants



An entry point for companies Not done yet

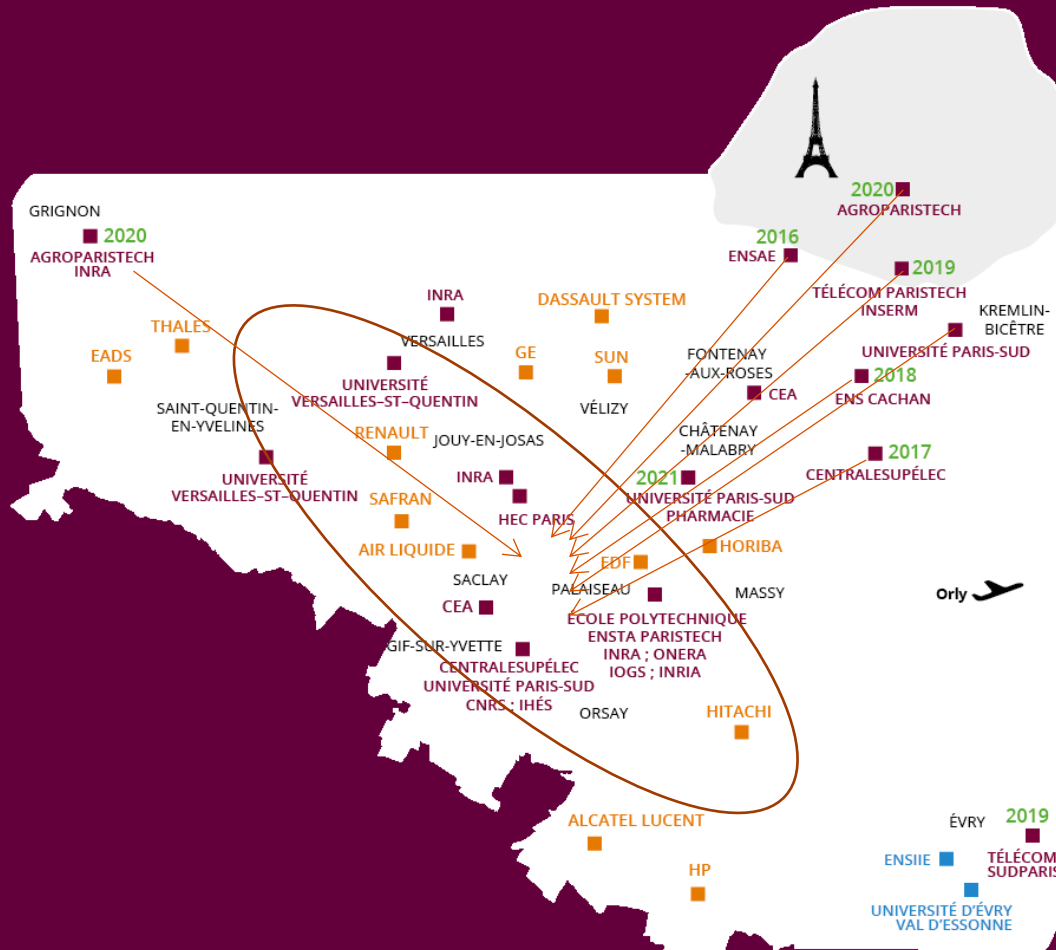
+8,500 R&D new jobs in 10 years
Danone, Thales, EDF, Safran, ..., big accounts and SME



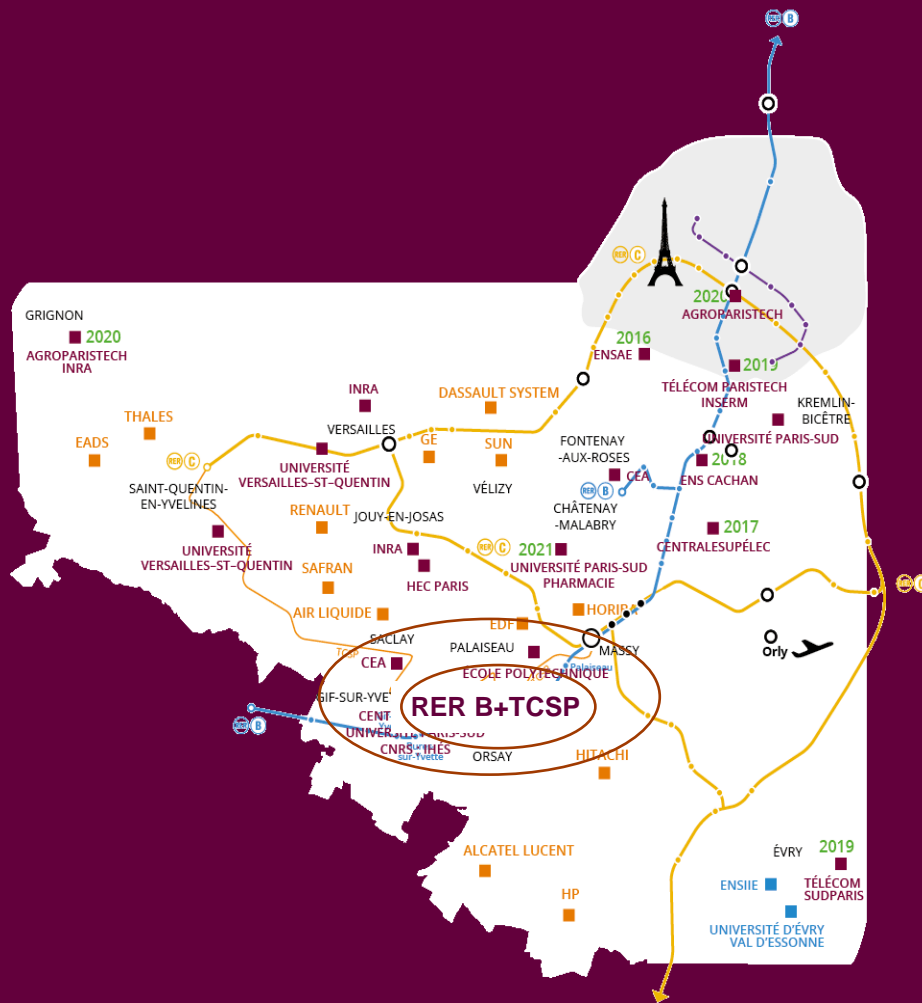
A new world class campus 2500 under construction

10,500 mix housing
Sport and cultural facilities

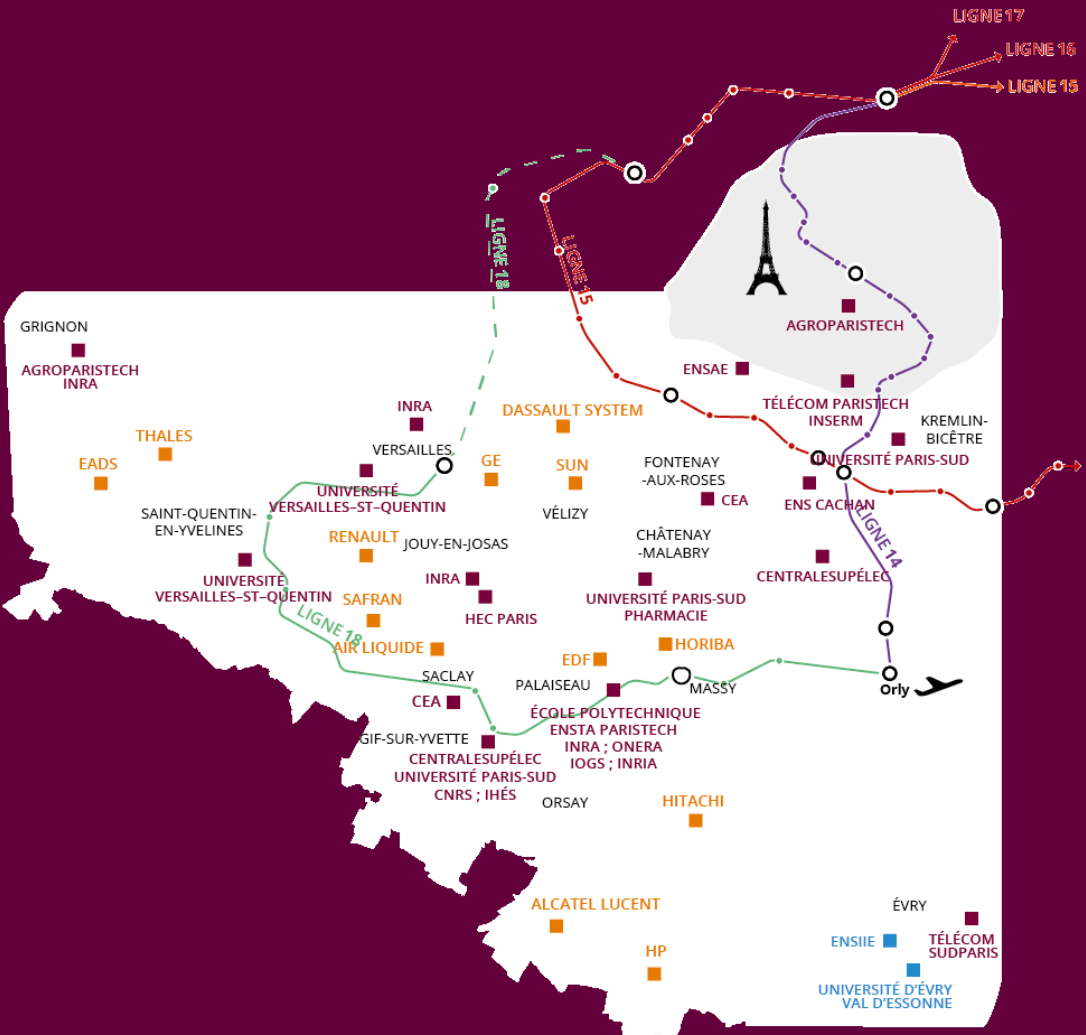
Our **6** main
corners
in progress



A
dense
territory
getting denser
and
well
surrounded by
companies



Already
connected
to Paris
and
suburbs...



Improved
in 2024
by the Line 18
in the frame of
the Grand Paris
Express project



New buildings and facilities



A common
Diploma
for
masters
and PhDs
starting 2015





Paris-Sud induction day

A common student card



A
common
brand
to be
endorsed by
each member

01
octobre
2015
15h - 21h



The graphic illustration features a central DJ turntable with hands operating it. Surrounding the turntable are various icons representing different activities: a hand holding a spray can labeled 'GRAFF', a camera, a bicycle wheel, a guitar, a coffee cup, a basketball, roller skates, a tennis racket, and musical notes. The background is a dark purple with a large yellow sun or moon. The text 'Open Festival' is written in a large, yellow, cursive font, with 'PARIS-SACLAY' in a smaller, yellow, sans-serif font below it. Underneath, the text 'Étudiants et personnels' is in a small white font, followed by '1ère rentrée de l'Université Paris-Saclay' in a larger white font, and 'Lieu : Ecole polytechnique, Palaiseau (91)' in a smaller white font.

Open Festival
PARIS-SACLAY

Étudiants et personnels
1^{ère} rentrée de l'Université Paris-Saclay
Lieu : Ecole polytechnique, Palaiseau (91)

First
students and
staff
openfestival
on the 1st of
october



www.universite-paris-saclay.fr/open-festival-paris-saclay

[@U_ParisSaclay](#) [Université Paris-Saclay](#) [Université Paris-Saclay](#) [UniversitéParisSaclay](#) #OpenFest #TeamUPSaclay

université
PARIS-SACLAY

Big data business convention
Nov. 24-25

An ambitious event with a national scope targeting challenges and opportunities of Big Data including data,

Purpose : strengthen relationships between the industry and the members of the Universit  Paris-Saclay to promote collaborative projects and to generate transfer opportunities.

Engineering & Frugal Innovation chair

To do more or better innovation with less

Universit  Paris-Saclay partners
AgroParisTech (lead), Institut d'optique
Graduate School,
Telecom ParisTech, Essilor, Carrefour

2 upcoming
events
before
end 2015

LAYING-OUT

Support of services and shops nearby



TRANSPORTS

- Accessible via metro lines 14 and 18 by 2023
- Favoring bike and pedestrian traffic



CATERING FACILITIES

23 000
meals/day

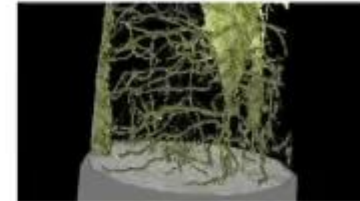
12
restaurants
under construction

ACCOMODATION

10 700

2 540
under
processing

New campus life present and future





www.universite-paris-saclay.fr



@U_ParisSaclay



UParisSaclay



Université Paris-Saclay

Follow us



Thank
you