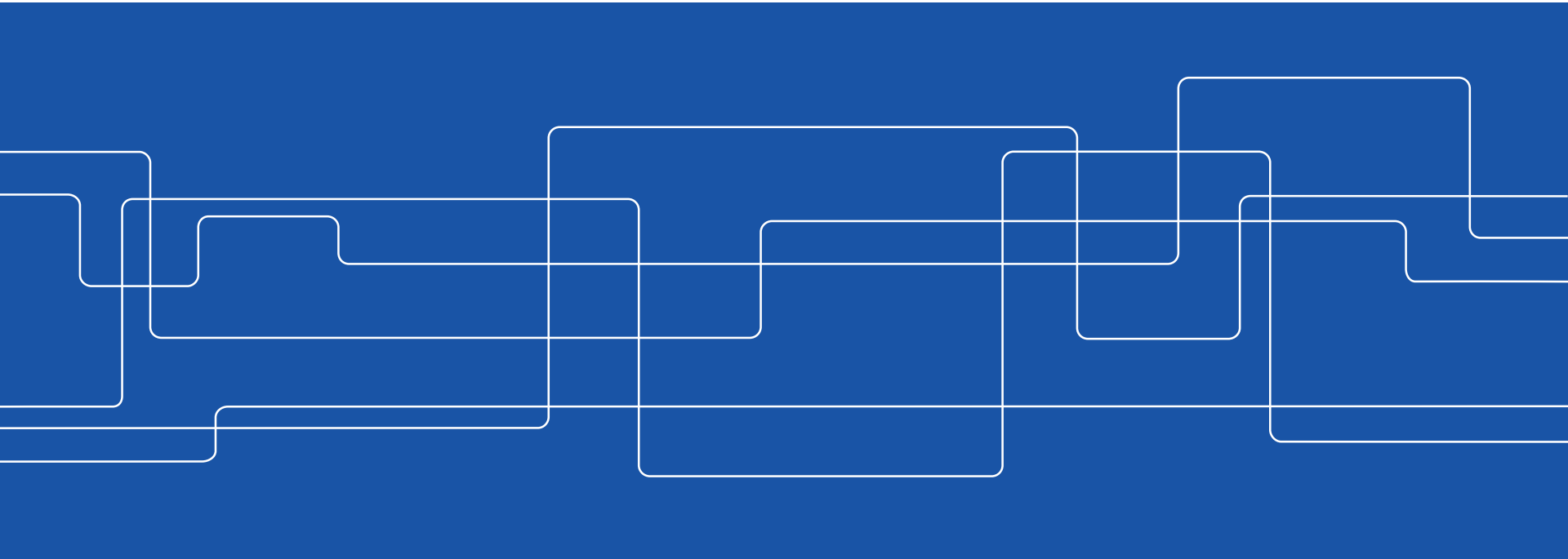




# Universities' Roles in Innovation Ecosystems

Mikael Östling, Deputy President





# A leading technical university in Europe





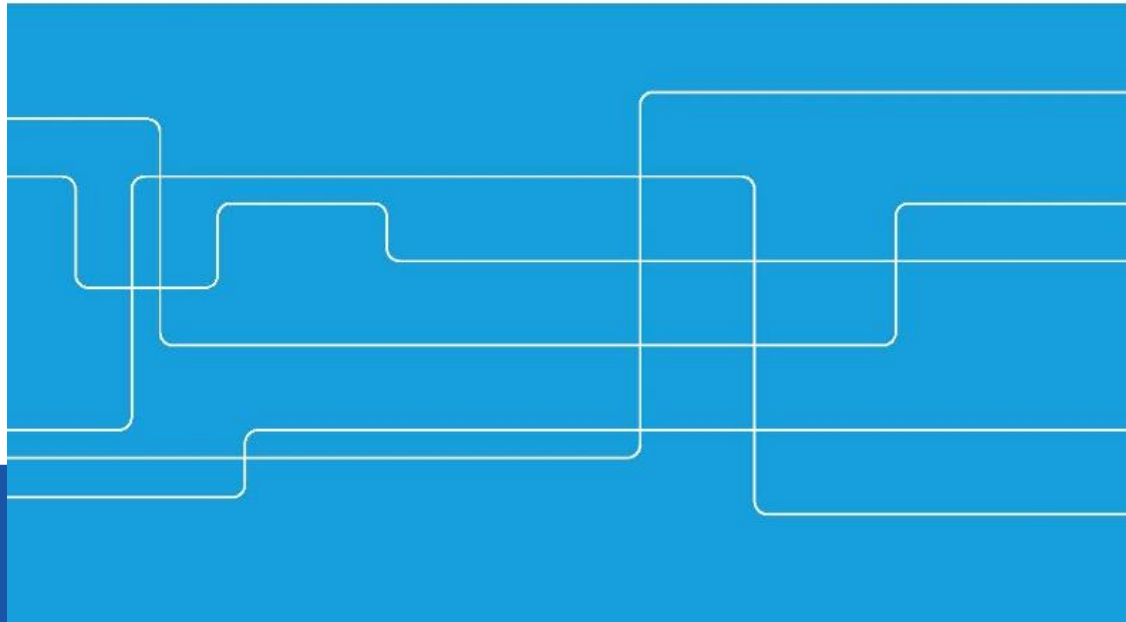
- **Founded 1827**
- **16,000 students**
- **2,000 PhD students**
- **5,400 employees**
- **Five campuses in the Stockholm region,**



# A leading KTH

A leading technical and international university creating knowledge and competence for a sustainable future

*Development plan 2018–2023*

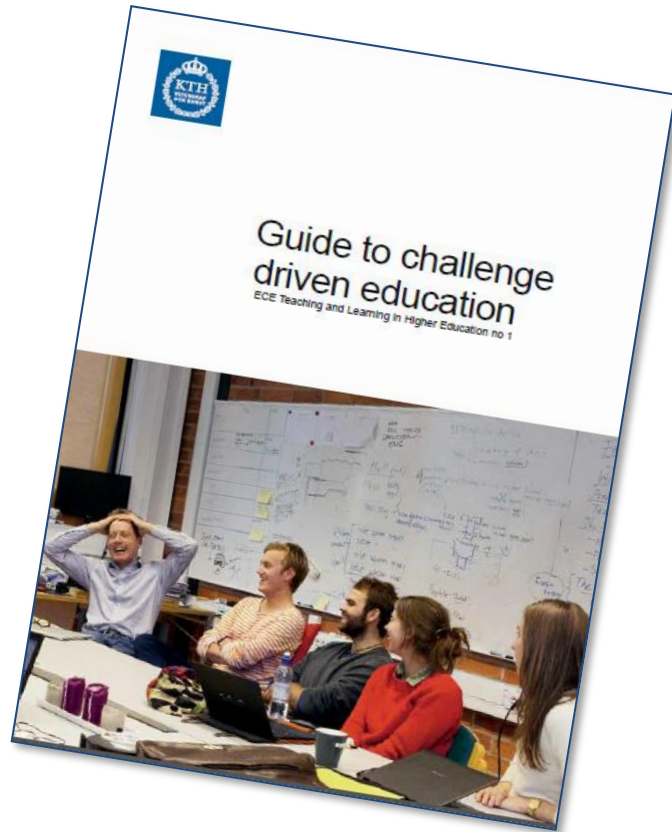


# Creativity, innovation and entrepreneurship integral to all study programmes.



- Classes and seminars in smaller groups
- Students are encouraged to solve problems together in groups, often in close collaboration with industry
- Encouraging innovative ideas and entrepreneurial spirit amongst students
- Latest cutting edge teaching and technological equipment

# Challenge driven education



## Thesis work with industry



DEGREE PROJECT IN ELECTRICAL ENGINEERING,  
SECOND CYCLE, 30 CREDITS  
STOCKHOLM, SWEDEN 2017

**Semantic and Physical Modeling  
and Simulation of Multi-Domain  
Energy Systems: Gas Turbines  
and Electrical Power Networks**

**MIGUEL AGUILERA CHAVES**

# Largest number of global companies (per capita)

**ABB**

**AGA**

**AKZO NOBEL**

**ASSA ABLOY**

AstraZeneca 

**Atlas Copco**

**Autoliv**

**biovitrum.**

**EF**

**Electrolux**

**ELEKTA**

**ERICSSON**

**GAMBRO**

**Handelsbanken**

**H&M**

**IKEA**

**Nordea**

**metro**

**MX**

**SAAB**

**SANDVIK**

**SEB**

**SCA**

**SCANIA**

**SECURITAS**

**SKANSKA**

**SKF**

**STORAENSO.**

**SSAB**

**SWEDISH MATCH**

**.TELE2.**

**TeliaSonera**

**Tetra Pak**

**VATTENFALL**

**VOLVO**



# KTH Strategic partnerships

Establishment of long-term collaboration for mutual development

- Yearly management dialogue on future challenges
- High level meetings all partners



SCANIA



SKANSKA



SAAB

BOMBARDIER



Stockholms stad



Stockholms läns landsting

## Instruments for collaboration

- EU/ National/ Regional initiatives
- Centra
- Mobility
- Joint Research projects
- Education- thesis, challenges in education, guest lectures
- Life long learning
- Research infrastructure



# The Professor's Privilege

The Professor's Privilege represents a deviation from Swedish customary rules regarding the employer's rights to employee's IP

The Professor's Privilege = “Researchers and teachers at universities own their patentable inventions themselves“

Normally, Swedish universities do not claim rights/ownership to any IP owned by employed researchers and teachers





# KTH INNOVATION – INNOVATION SUPPORT TO STUDENTS AND STAFF

Increase  
ideas

The background of the slide is a black and white photograph of a KTH campus courtyard. A large stone sculpture of a hand is prominent on the right. Three large green circles are overlaid on the image, each containing white text. The circles are arranged from left to right, corresponding to the text blocks below.

Effective  
support  
process

Access to  
a world  
class  
ecosystem

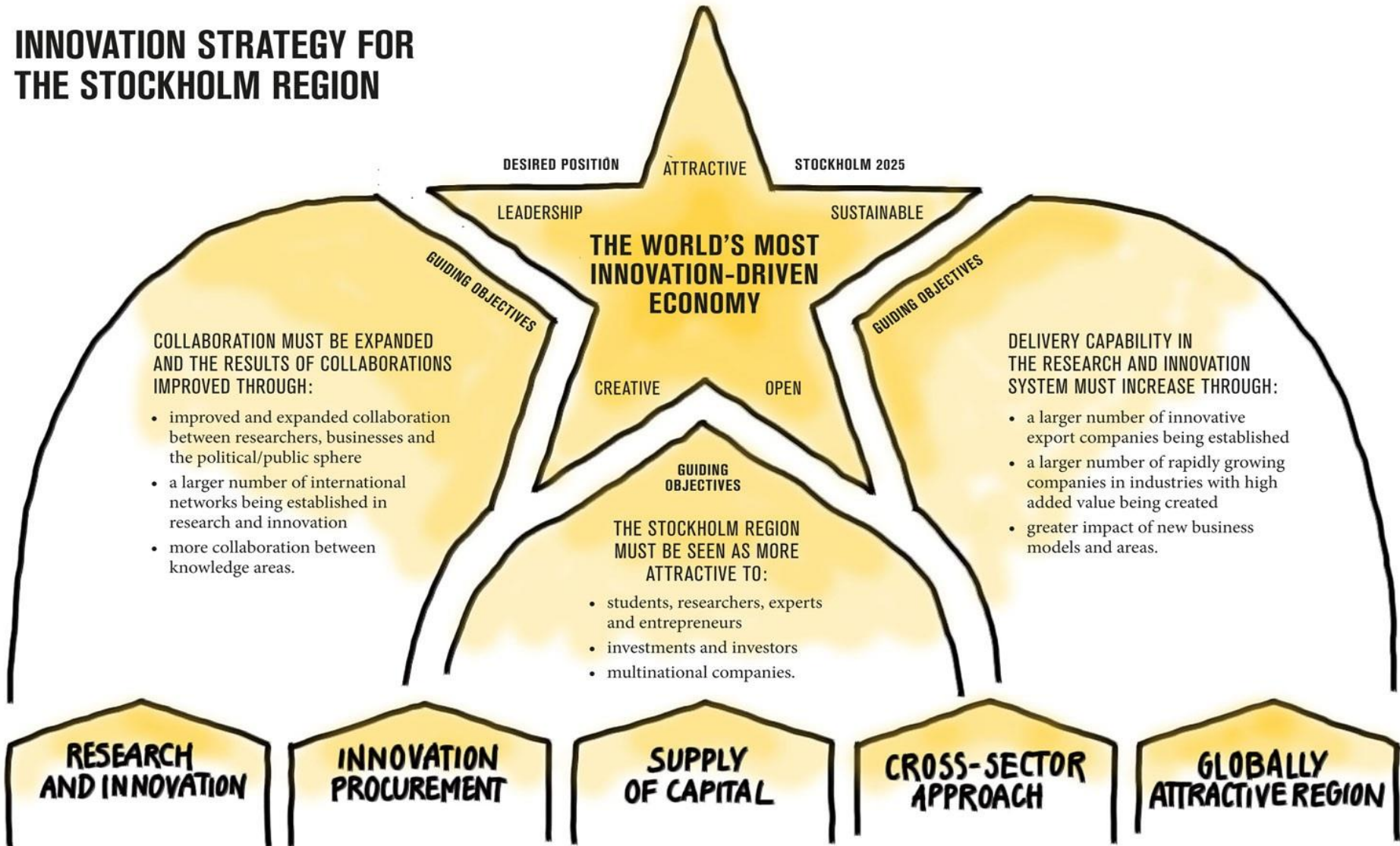


# Societal Impact from Research Infrastructures

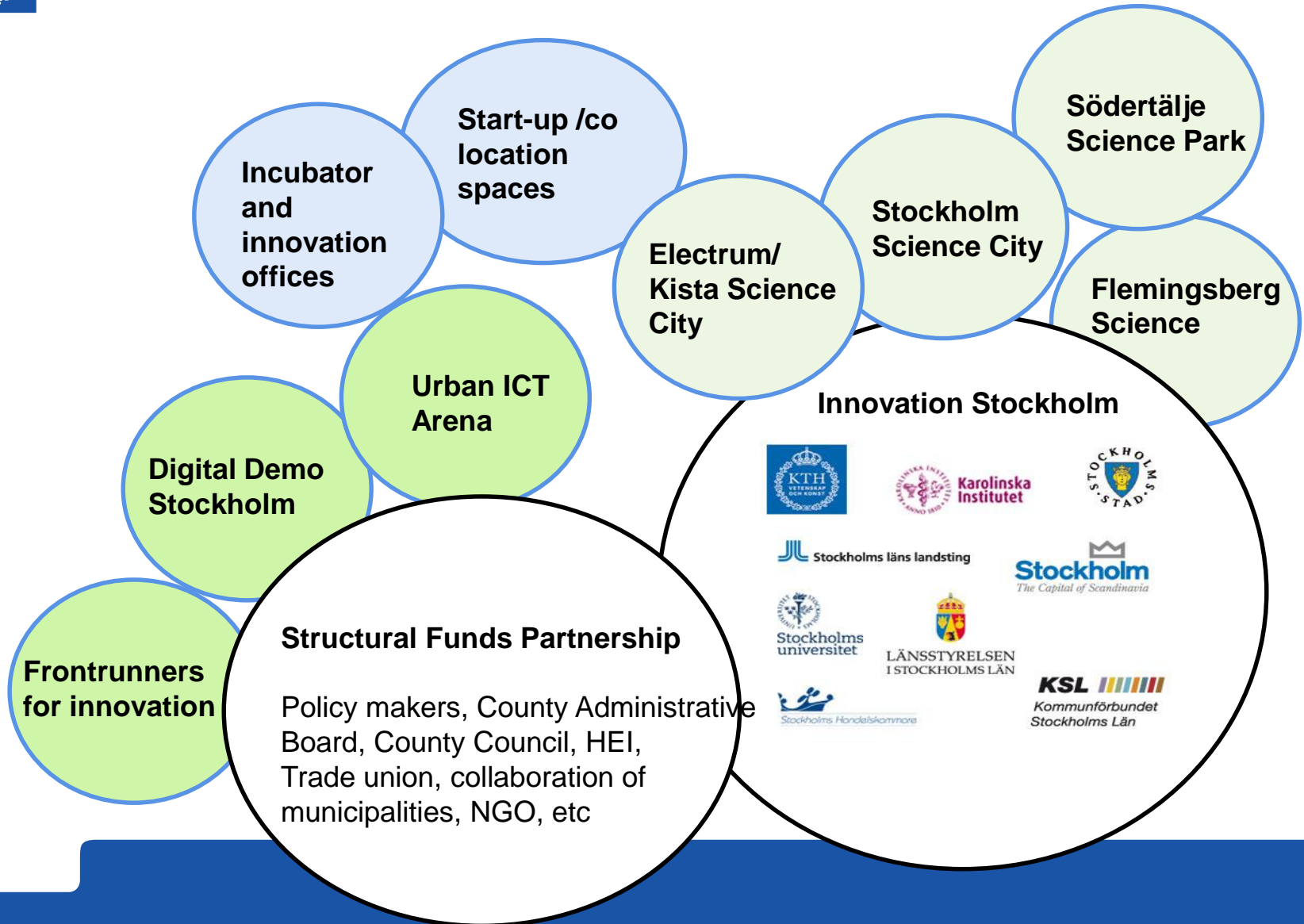
1. Source for Innovation and accelerating commercialization from science
2. Tech and business development for subcontractors
3. General Accountability for research
4. Increase public interest for Science, Research and Technological development
5. Science villages in cities



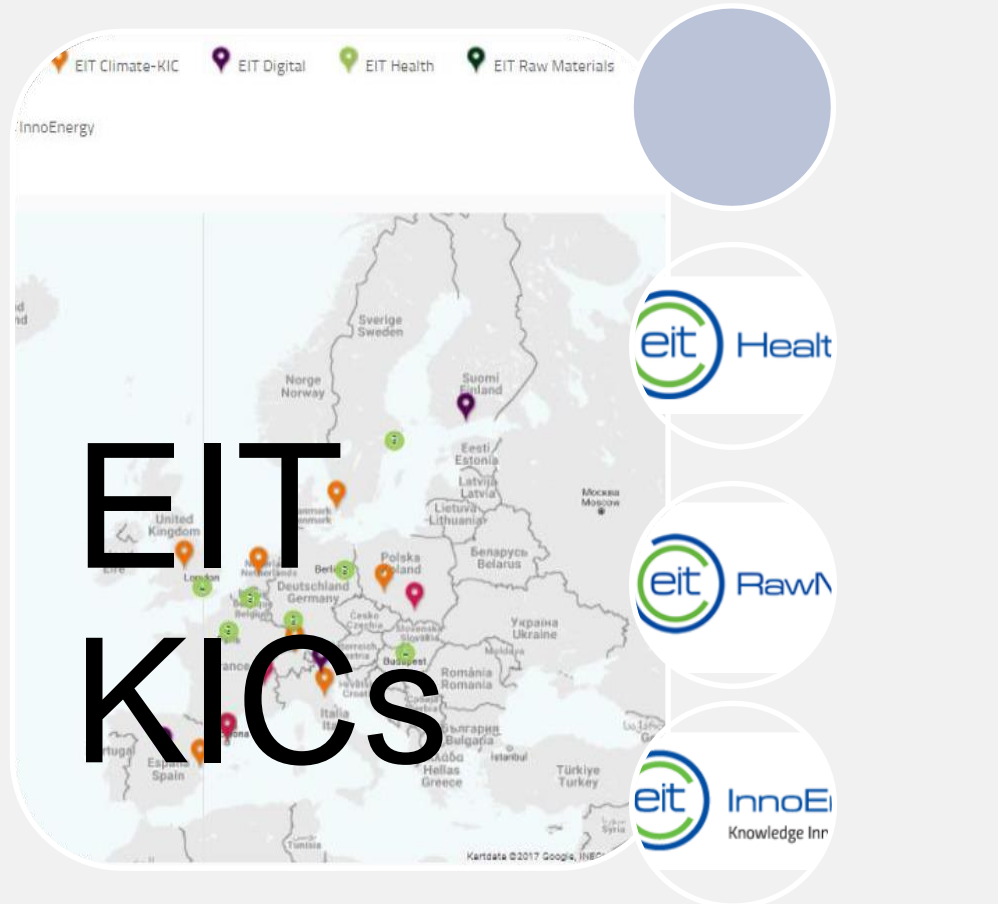
# INNOVATION STRATEGY FOR THE STOCKHOLM REGION



# Many regional innovation supporting platforms



# European engagement



EIT Climate-KIC

EIT Digital

EIT Health

EIT Raw Materials

InnoEnergy

**EIT  
KICs**

eit Health

eit RawM

eit InnoEi Knowledge Inn

The Human Brain Project



<https://www.humanbrainproject.eu/en/>