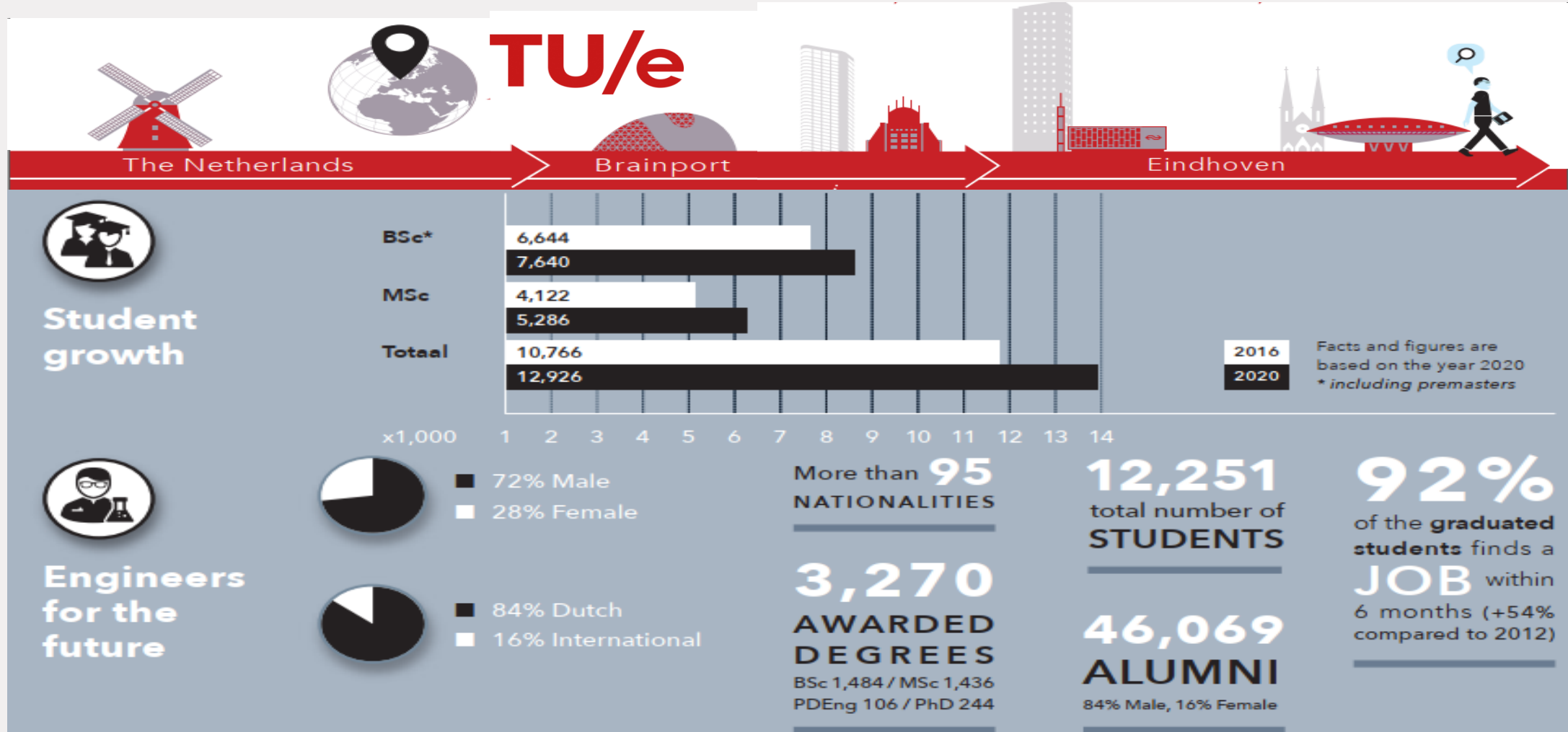




It's all about Impact !

Robert-Jan Smits, President of the Eindhoven University of Technology

TU/e at a glance



TU/e: Born out of industry

London 1944, Prof. Jan de Quay:

- Netherlands needs a second Polytechnic.
- Engineers are the driving force for Dutch economy

Industry needs (DAF, Shell, Philips)

Eindhoven 1956: Polytechnic founded



TU/e: #1 University – Industry science cooperation












2017: THES ranking Industry Impact

2019: CWTS ranking Co-authorship Industry

MAKING STRIDES: TOP INNOVATION COLLABORATORS				
Rank	University	Country	Web of Science documents	Category normalised citation impact
1	Eindhoven University of Technology	Netherlands	1,316	1.55
2	Harvard University	US	1,064	3.71
3	University of Washington	US	872	2.26
4	University of Science and Technology of China	Mainland China	812	1.20
5	University of Minnesota	US	790	1.71
6	Massachusetts Institute of Technology	US	718	2.55
7	University of California, San Diego	US	703	2.50
8	Stanford University	US	683	3.17
9	Delft University of Technology	Netherlands	671	2.21
10	University of Michigan	US	649	2.06

Source: Clarivate Analytics



University	P	P(industry)	PP(industry)
1 Eindhoven Univ Technol 	6277	989	15.8%
2 Chalmers Univ Technol 	6403	815	12.7%
3 Japan Adv Inst Sci & Technol 	7895	905	11.5%
4 Tech Univ Denmark 	11375	1296	11.4%
5 Hannover Med Sch 	6450	713	11.1%
6 Med Univ Vienna 	8672	915	10.6%
7 Delft Univ Technol 	10667	1124	10.5%
8 Icahn Sch Med - Mt Sinai 	13249	1371	10.3%
9 Tokyo Inst Technol 	9511	971	10.2%
10 KTH Royal Inst Technol 	10162	1033	10.2%
11 Vienna Univ Technol 	5706	572	10.0%



A Vibrant High Tech Sector – Brainport Eindhoven



PHILIPS

ASML

NXP



TNO innovation for life



BRAINPORT
Eindhoven

TU/e Impact

- Students and graduates
- Knowledge generation and transfer
- Start-ups and spin-off's
- Scientific support to policy making
- Science communication
- Teachers at high schools and academic institutions
- A vibrant city

Student Teams – challenged based learning



TU/e Student Team Solar



HOME NEWS ▾ OPINION ▾ VIDEO PHOTO ▾ AROUND THAILAND ABOUT US



9

The solar-powered vehicle drives in a closed road, in Guyancourt, south of Paris, Friday Sept. 24, 2021. (AP Photo/Thibault Camus)

Paris Welcomes Solar Powered Vehicle on Its Way to Spain

OFFBEAT



HERALDO Aragón Deportes Real Zaragoza Nacional Internacional Economía Cultura [SUSCRÍBETE](#)

MOVILIDAD

Stella Vita, una casa móvil que funciona con energía solar

Mobility City arropa a estudiantes holandeses en la presentación en Zaragoza de un vehículo futurista que apuesta por la movilidad sostenible.

NOTICIA ACTUALIZADA 6/10/2021 A LAS 05:00
LUIS H. MENÉNDEZ



TU/e student team World Champion Robotics Football!



TU/e winner of the Triple E Award - challenged based learning



Photo: Bart van Overbeeke Photography

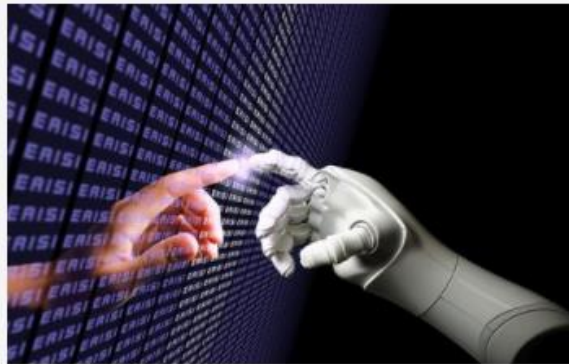


Knowledge generation and transfer: 4 Cross Disciplinary Research Institutes



Eindhoven Institute for Renewable Energy Systems

The Eindhoven Institute for Renewable Energy Systems (EIRES) is TU/e's answer to the broad, multidisciplinary question that is the energy...



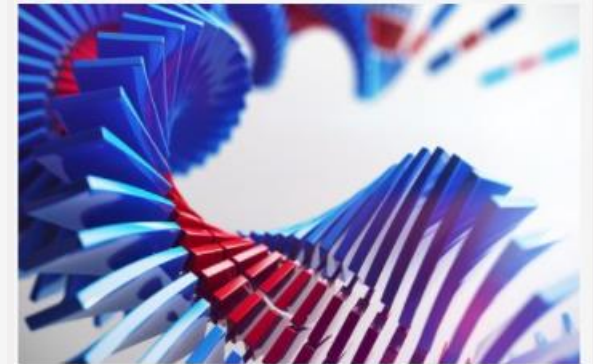
Eindhoven Artificial Intelligence Systems Institute

The Eindhoven Artificial Intelligence Systems Institute (EAISI) aims to develop AI-technology for the real world.



Eindhoven Hendrik Casimir Institute

The Eindhoven Hendrik Casimir Institute brings together the world-class photonics and quantum research at TU/e to create a unique and...



Institute for Complex Molecular Systems

Molecules constitute the world around us—both natural and synthetic. Even we humans are teeming with molecules. Through understanding of...



Knowledge generation and transfer: 3D Printed Houses



TU/e startups and Spin-offs



Prodrive Technologies



Lightyear

Scientific Support to Policy Making



Prof. Bert Blocken

Spread of aerosols
in relation to
transmission of
Corona-virus

Scientific support to policy making



THE IPCC AND THE MITIGATION OF CLIMATE CHANGE REPORT

The goal of the Paris climate agreement - to limit global warming to 1.5 degrees Celsius - will be out of sight unless countries collectively show more ambition and take immediate action. This is the view of Heleen de Coninck and four other Dutch climate experts

Challenges

- Sustainability
- Student well-being
- Diversity – gender equality
- Knowledge security
- Staff shortages
- Student housing
- Open Science
- Growth-scale jump



Thank you for your attention.