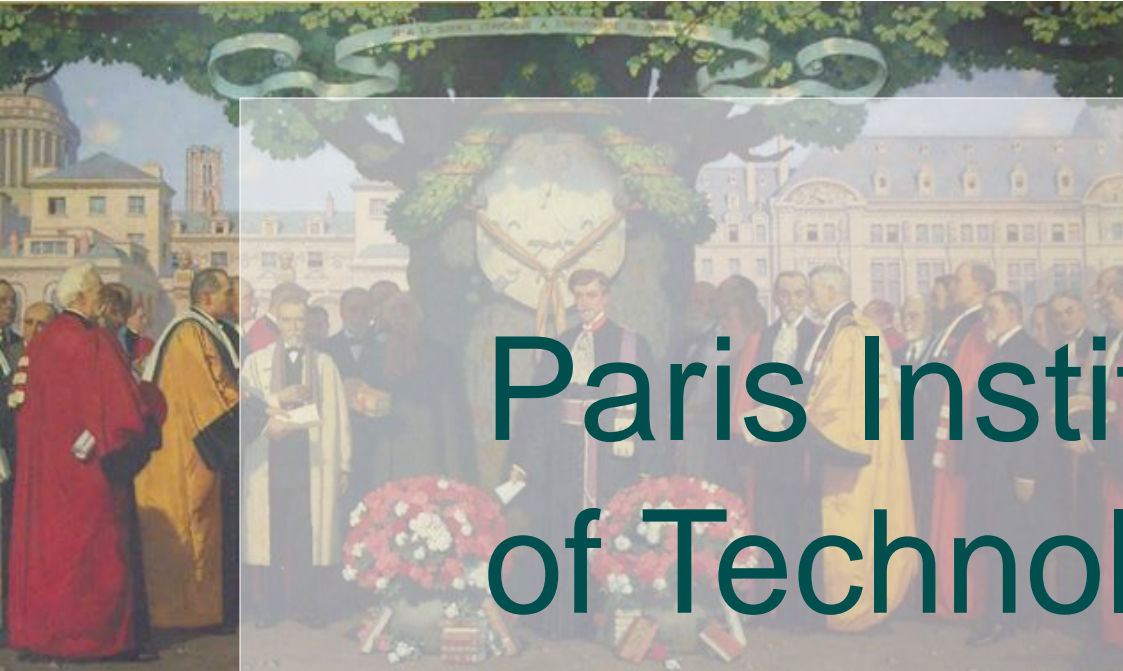


ParisTech

GRANDES ECOLES D'INGENIEURS DE PARIS
PARIS INSTITUTE OF TECHNOLOGY

Paris Institute of Technology



What is ParisTech ?



A consortium of 11 of the most prestigious institutes in France, covering almost the whole range of sciences and engineering technologies

ParisTech trains high level researchers and engineers for positions in production, research and development as well as management.



- 11 000 students (12% of whom are international)
- 2 000 PhD students
- 3 000 faculty members
- 130 laboratories
- 340 Million € for research
- 75 000 Alumni



Mathematics and applications



Information and communication sciences and technologies



Physics, optics



Material science, mechanics and mechanical engineering



Fluid mechanics and energy



Chemistry, physical chemistry and chemical engineering



Life sciences and engineering



Earth sciences and environmental engineering



Economics and social sciences

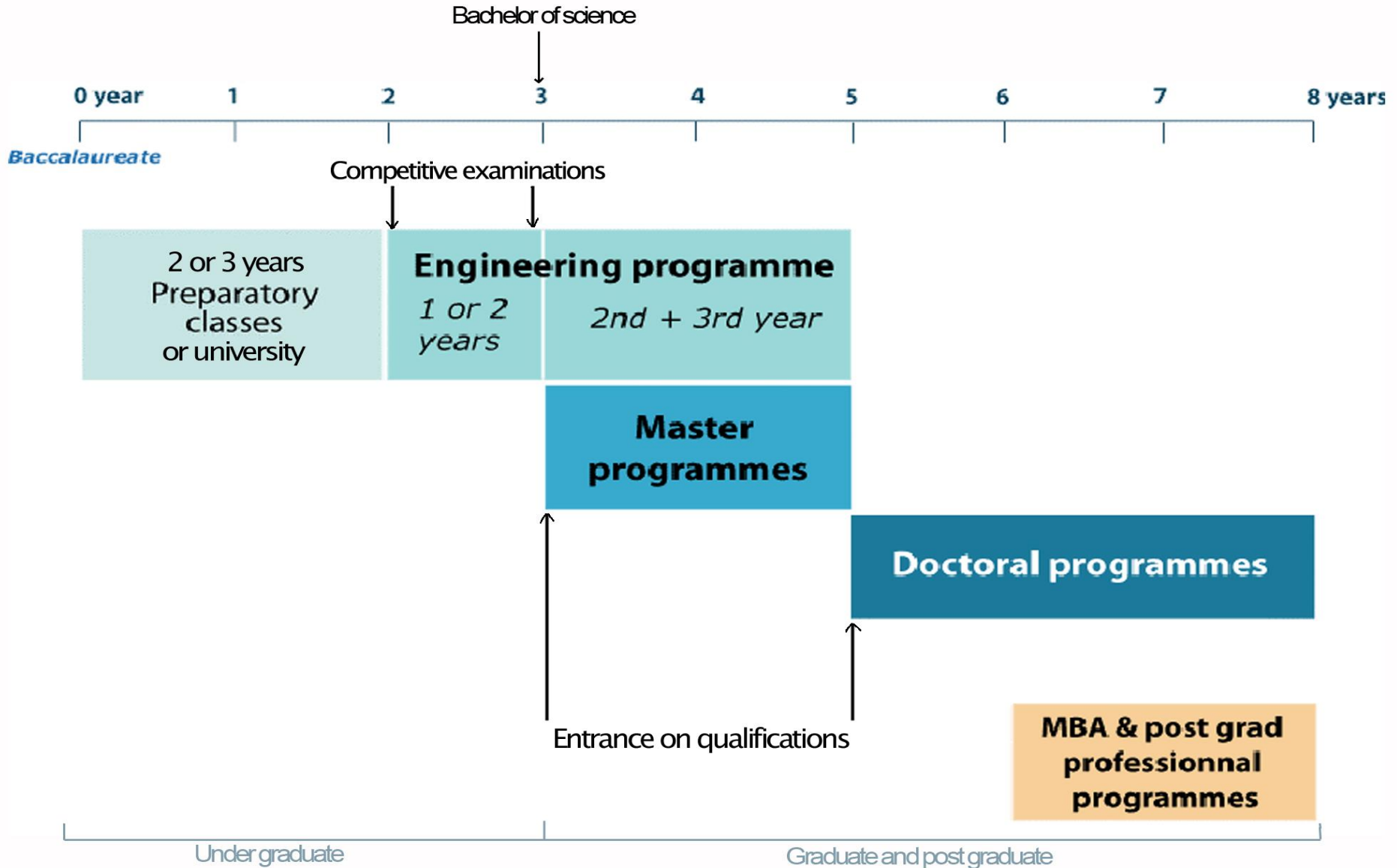


ParisTech offers 3 types of programmes :

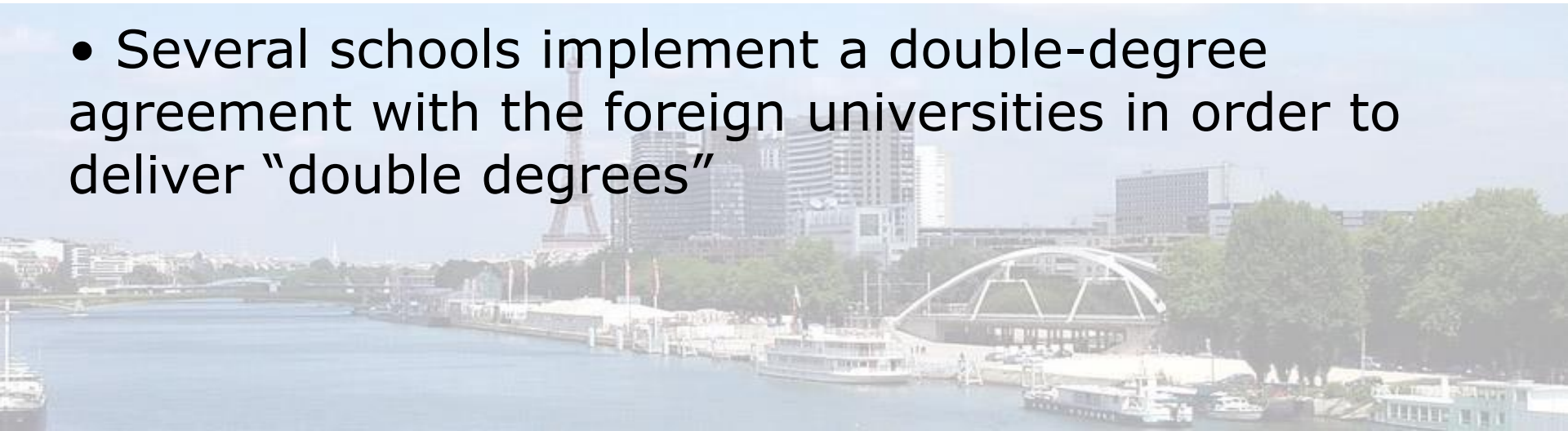
- 1 - Engineering degree programmes (double degrees)*
⇒ **2800 engineering degrees awarded each year**
- 2 - Master of Science ParisTech programmes*
⇒ **15 programmes**
- 3 - Doctoral programmes*
⇒ **500 PhDs awarded each year**

ALL ARE OPEN TO FOREIGN STUDENTS

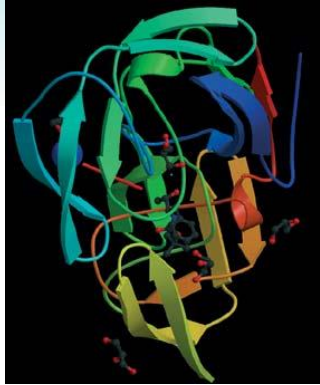




- Admission after 2 to 4 years of higher education
- A selection process according to academic records
- 2 to 4 years in ParisTech schools
- Several schools implement a double-degree agreement with the foreign universities in order to deliver “double degrees”



- **Tailored to european standards**
- **18 months to 2 years in Paris :**
 - a period of courses, practical work and personal project
 - a period of internship in a company or a research laboratory
- **Fields :** Environmental Engineering, Information Systems, Management Sciences, Chemistry and Chemical Engineering, Process Engineering, Information Systems, Mechanics, Environment and Technology, Advanced technologies and Materials for industry, Telecommunications, Mechanical and Production Engineering
- **Admission** after a bachelor of science diploma and a period, if needed, to improve French language
- **Cost :** 5 000 € to 15 000 €, with student grants in certain cases



2000 students in doctoral studies

In more than 20 fields



Basic Science	Engineering sciences	Economics and social sciences
<ul style="list-style-type: none">• Pure and applied mathematics• Physics• Chemistry• Physical chemistry• Biology• Earth Sciences• Materials	<ul style="list-style-type: none">• Computer science and robotics, control• Electrical eng, Electronics, Telecom• Chemical engineering• Energetics• Civil and urban engineering• Environmental and agricultural engineering• Bio engineering• Mechanical engineering• Material engineering	<ul style="list-style-type: none">• Economics• Management• Innovation and product design• Science, Technology, Society

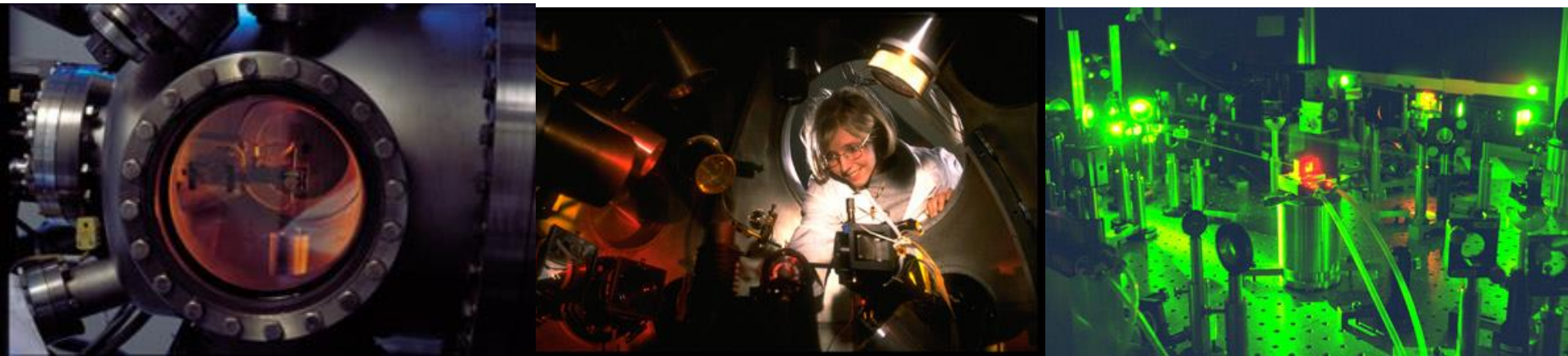
Academic and Research staff : **2040**

Research Budget : **346 Million €**

***120 research units linked to CNRS, INRA, CEA..
Contracts with industry, EU...***

13,7 millions € european contracts

43,5 millions € other contracts



ParisTech

GRANDES ECOLES D'INGENIEURS DE PARIS
PARIS INSTITUTE OF TECHNOLOGY

ParisTech rassemble dix des plus prestigieuses écoles d'ingénieurs françaises. Couvrant l'ensemble des sciences et des techniques de l'ingénieur, il constitue un pôle d'excellence à l'égal des meilleures universités mondiales.

ParisTech brings together ten of the foremost French institutes of engineering education and research. Covering the whole range of science and engineering, it forms a world-class university of technology.



Bienvenue !

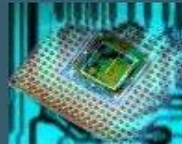
Présentation

Formation d'ingénieurs
les Masters of Science ParisTech
l'Université d'été de ParisTech

Recherche et études doctorales

Étudier à ParisTech

Contacts



Plan du site

Annuaire



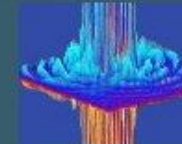
PASTEL : les thèses de
ParisTech en ligne



Actualités

European Summer University
16-31 / 7 / 2005
Athens programme
12-19 / 11 / 05

News



Site map

Directory of ParisTech

ParisTech

GRANDES ECOLES D'INGENIEURS DE PARIS
PARIS INSTITUTE OF TECHNOLOGY



Welcome !

What is ParisTech

Engineering Education
M Sc ParisTech programmes
European Summer University

Research and doctoral studies

Studying at ParisTech

Contacts

École Nationale du Génie Rural, des Eaux et des Forêts (ENGRF)
École Nationale des Ponts et Chaussées (ENPC)
École Nationale Supérieure d'Arts et Métiers (ENSAM)
École Nationale Supérieure de Chimie de Paris (ENSCP)
École Nationale Supérieure des Mines de Paris (ENSMMP)
École Nationale Supérieure de Techniques Avancées (ENSTA)

École Nationale Supérieure des Télécommunications (ENST)
École Polytechnique (EP)
École Supérieure de Physique et de Chimie Industrielles de la Ville de Paris (ESPCI)
Institut National Agronomique Paris-Grignon (INA P-G)
École Nationale de la Statistique et de l'Administration Économique (ENSAE) (membre associé)

« PASTEL »

- Ph.D dissertations available on the web site can be downloaded (since the beginning 2003)
- 500 doctorates each year in ParisTech schools

➔ www.paristech.org and “PASTEL”

Catalogue and open course ware

End of 2005

CATALOGUE

- Programs' description
- 3000 Courses' syllabus

100 %

50 %

OPEN COURSE WARE

- text books, exercices...
- Reference : *MIT Open course ware*

100

- **BUTE Budapest**
- **TU Delft**
- **KU Leuven**
- **IST Lisbon**
- **UCL Louvain-la-Neuve**

- **UP Madrid**
- **NTNU Trondheim**
- **CTU Prague**
- **Milano**
- **Munich (TU)**
- **ParisTech**

Intensive courses for european students (two weeks a year)

UNITECH Network : training of European trilingual engineers-entrepreneurs

- RTWH (Aachen)
- U. P. Catalogne (Barcelone)
- T.U (Delft)
- Chalmers Univ. (Göteborg)

- Imperial College (Londres)
- Politecnico (Milan)
- ETH (Zurich)
- **ParisTech**

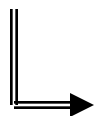
Engineering degree programmes

- 9 collaborative agreements with : Beida, Tsinghua, CAU, Nanjing U., SouthEast U., NAU, Tongji, Fudan, Jiaotong
- 60 engineers graduated every year at ParisTech

Master and MBA programmes

Franco-Chinese Institute for Engineering and Management (IFCIM)

- Shanghai International Master of Business administration (MBA)
- Intelligent Transportation Systems (MSc)
- New Information Technology (MSc)
- Water and Sewerage (MSc)
- Industrial Risk Management (MSc)



Since 2000, about 500 students have already graduated or are currently training in these programmes